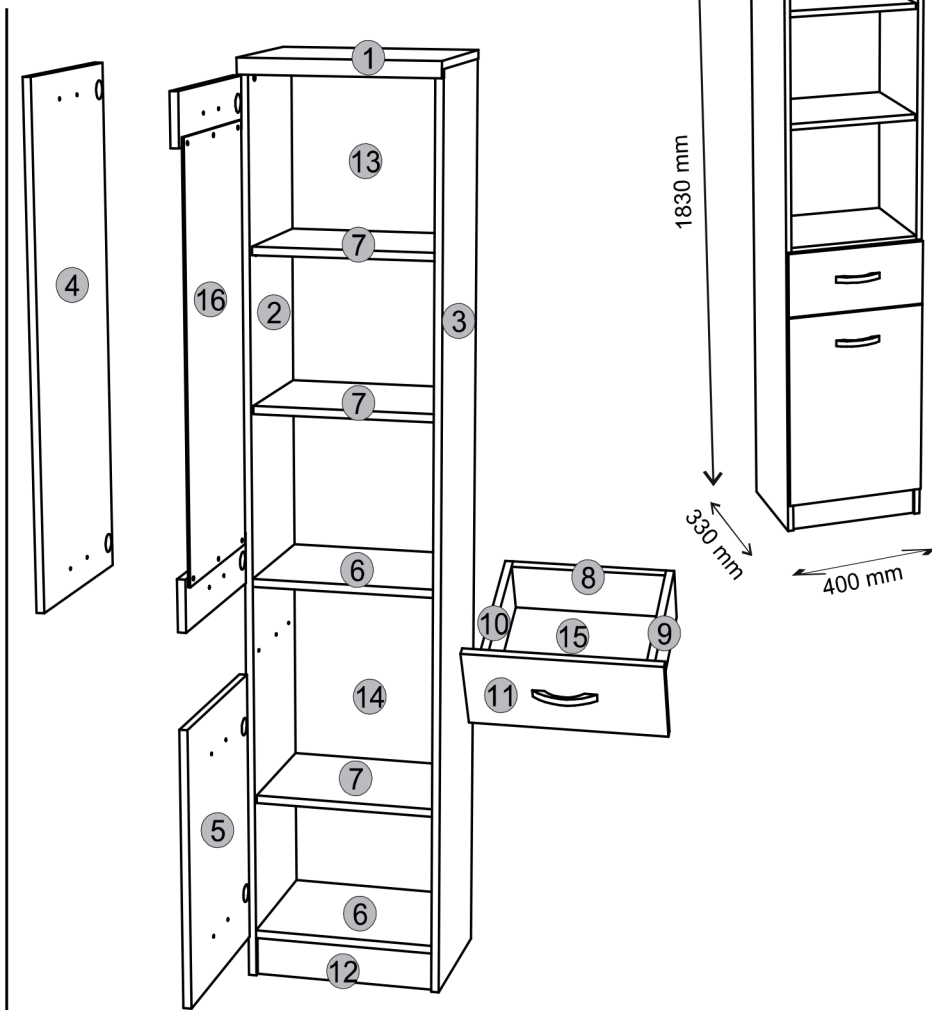
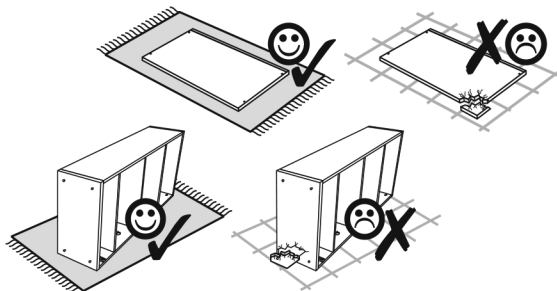
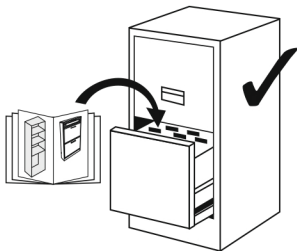
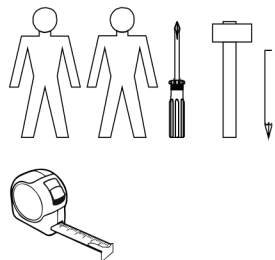
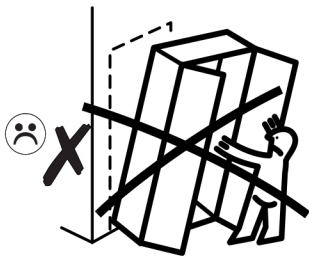
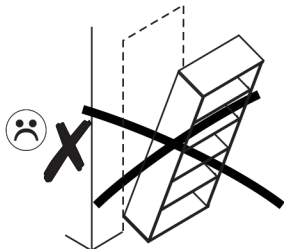
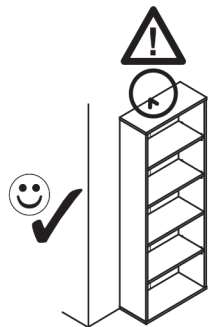




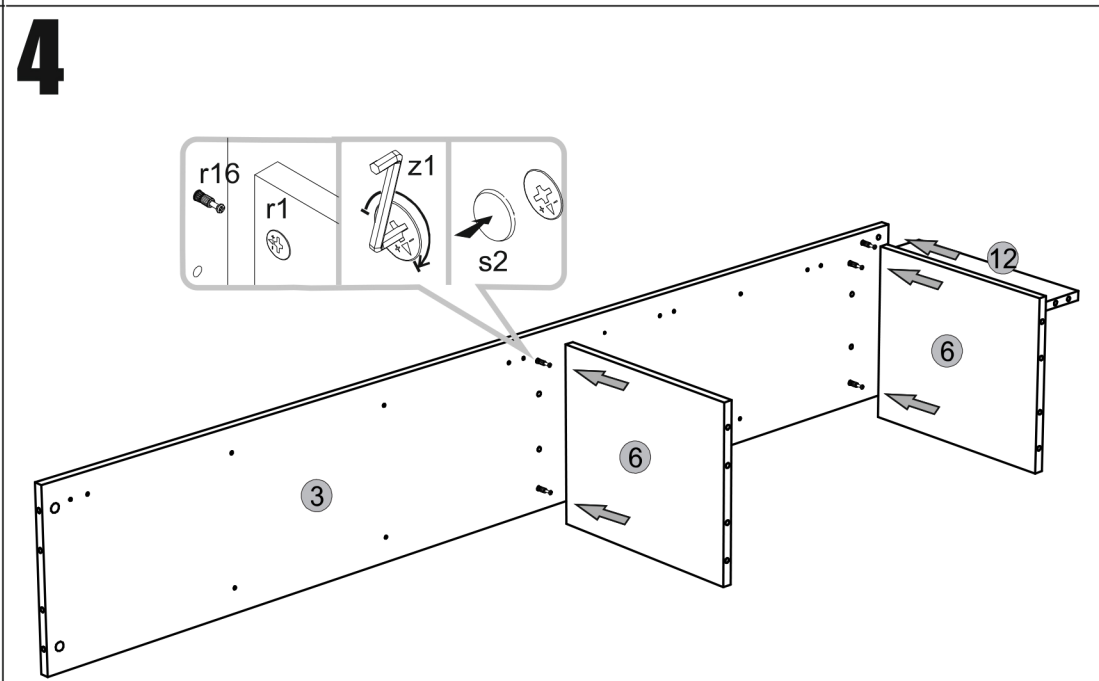
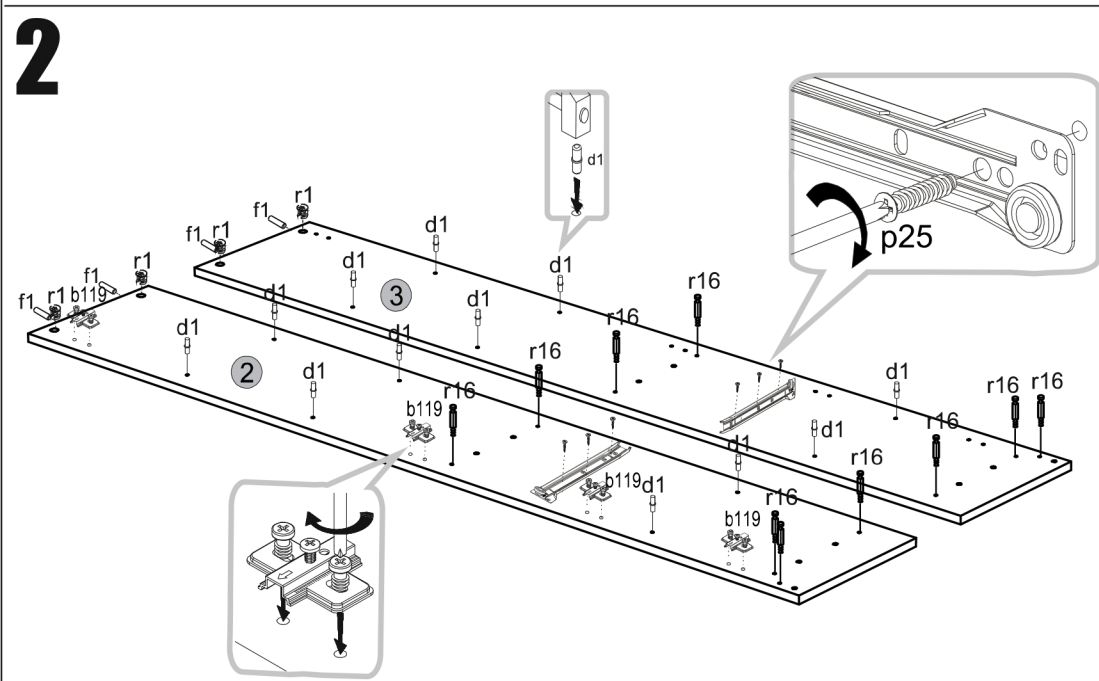
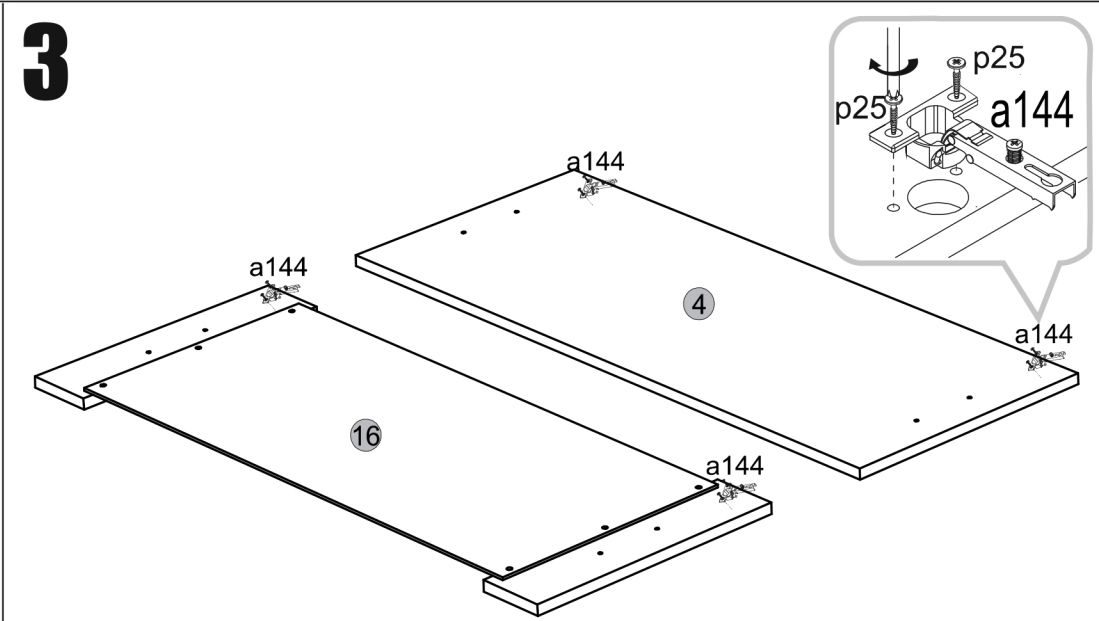
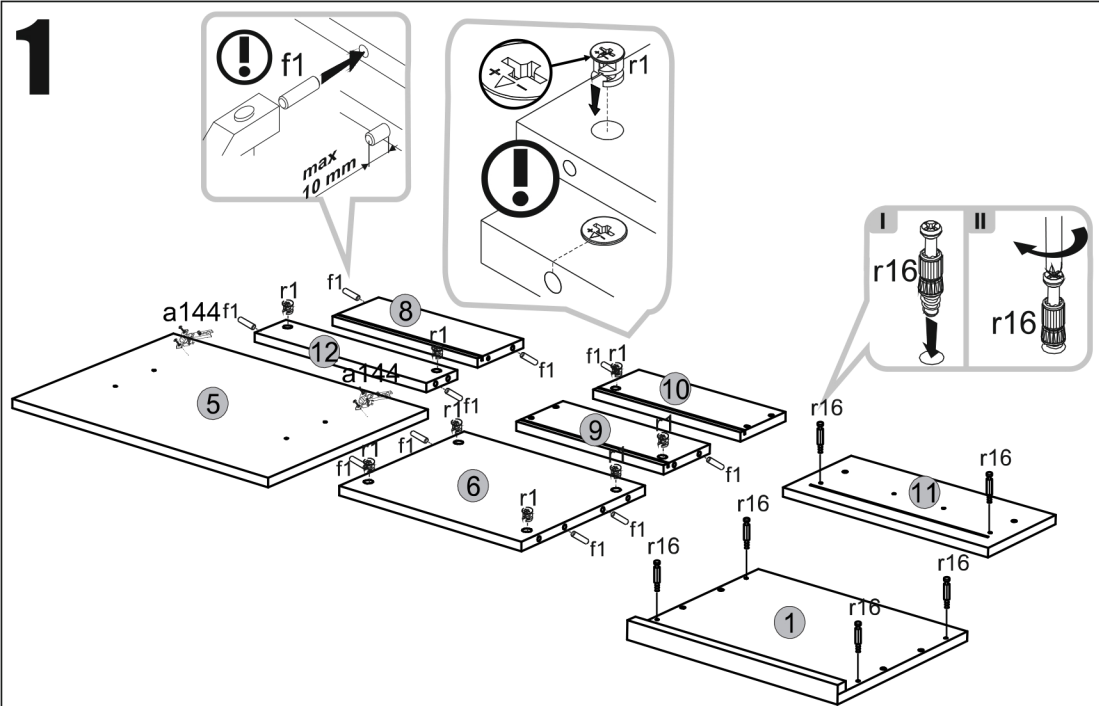
# TOPTY 2D1S / 1D1W1S / 1D1S



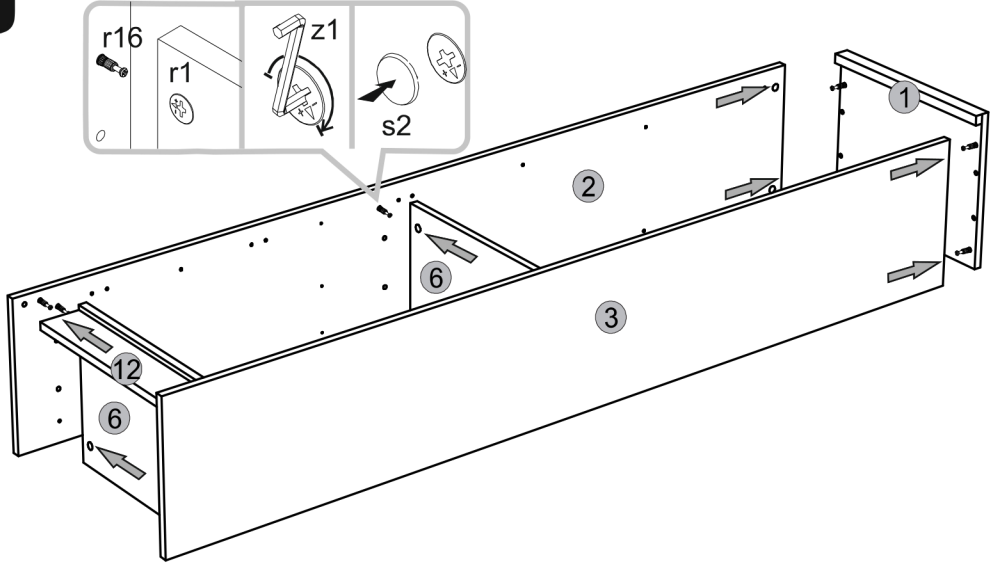
1	402	330	16/32	1	T-213	1/1
2	1814	310	16	1	T-123	1/1
3	1814	310	16	1	T-124	1/1
4	982	396	16	1	T-019	3/3
5	546	396	16	1	T-011	2/2
6	368	310	16	2	T-323	1/1
7	368	295	16	3	T-322	1/1
8	311	120	16	1	T-518	1/1
9	300	120	16	1	T-503	1/1
10	300	120	16	1	T-504	1/1
11	396	180	16	1	T-012	2/2
12	368	80	16	1	T-408	1/1
13	1011	197	3	2	T-613	1/1
14	734	394	3	1	T-614	2/2
15	325	298	3	1	T-615	1/1
16	982	396	16	1	T-013	3/3

- 1x n14
- 4x k1
- 3x c53
- 6x p42
- 50x l1
- 2x p52
- 1x z1
- 1x p17
- 12x d1
- 16x s2
- 16x r1
- 16x r16
- 18x f1
- 22x p25
- 1x f3
- 2x e1
- 2x s1
- 1x L-300
- 8x s4
- 4x b119
- 4x a144

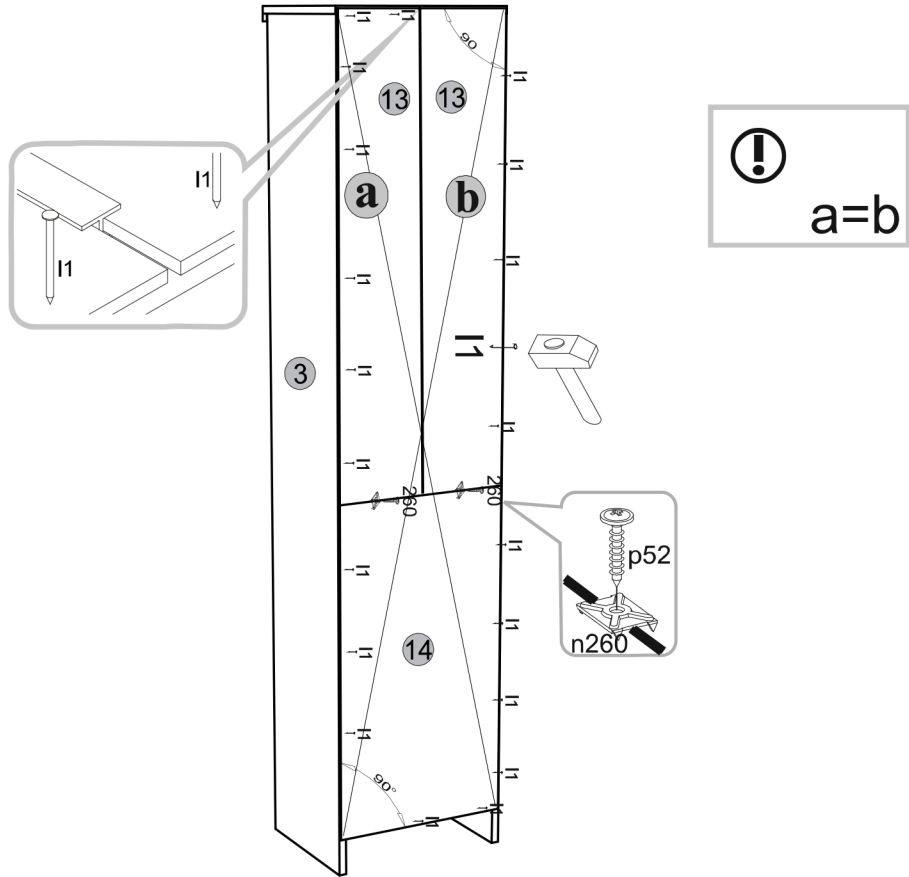




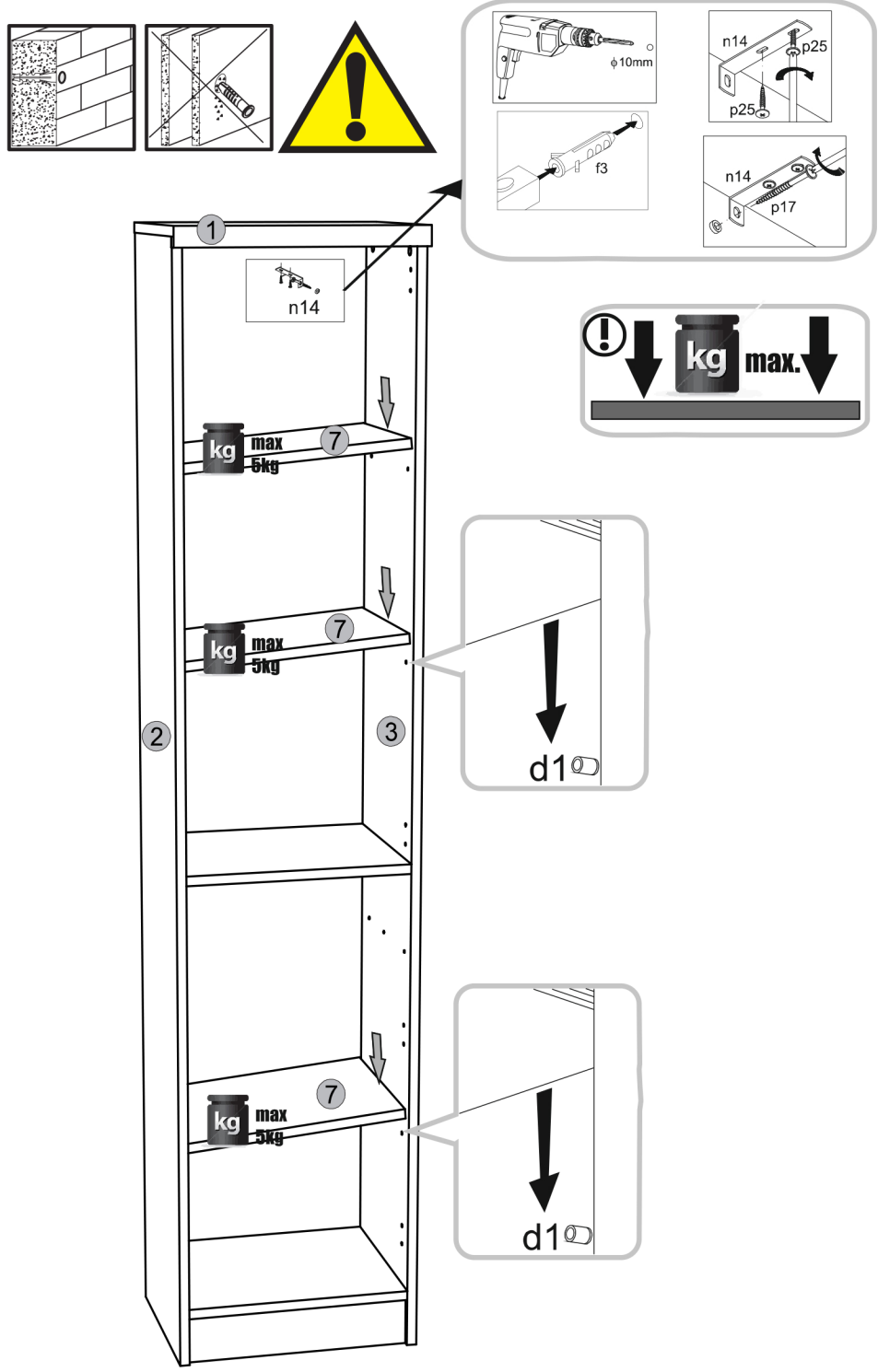
5



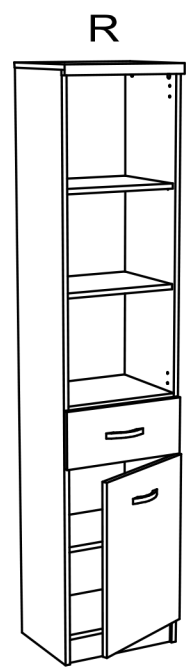
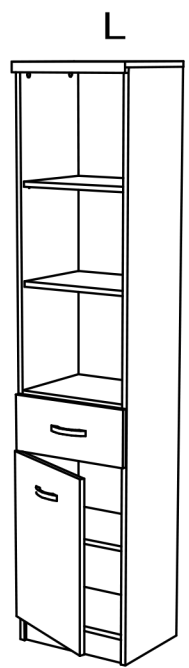
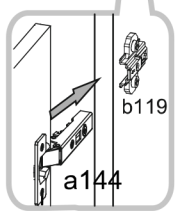
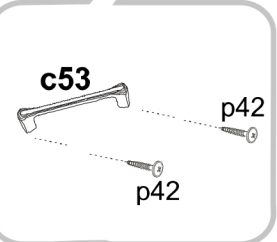
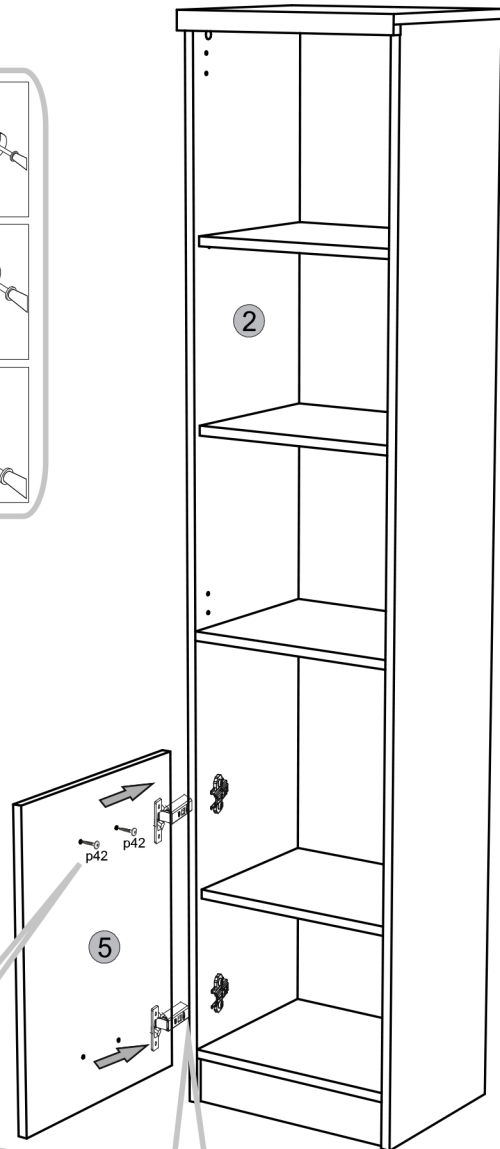
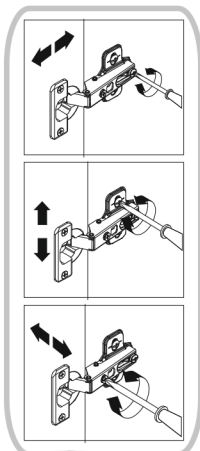
6



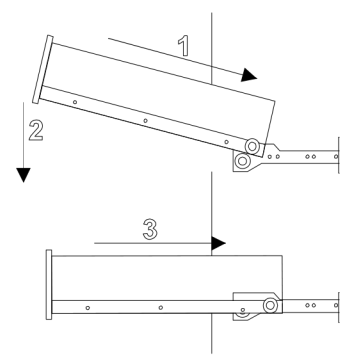
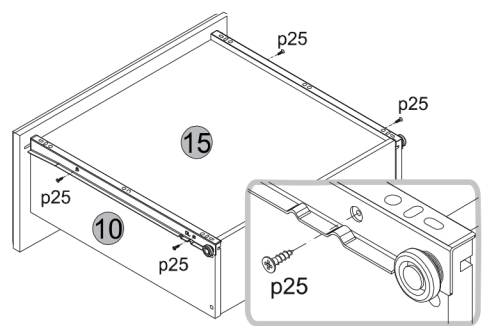
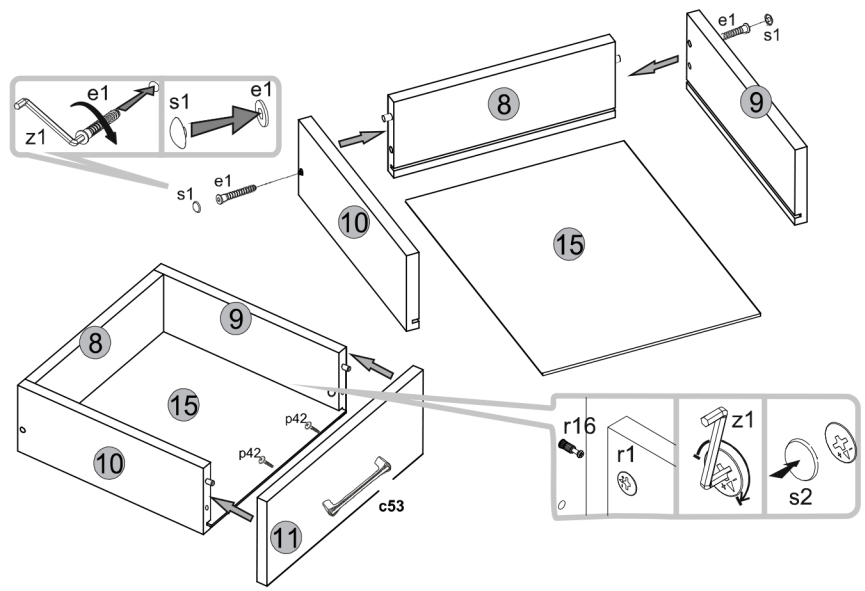
7



# 8



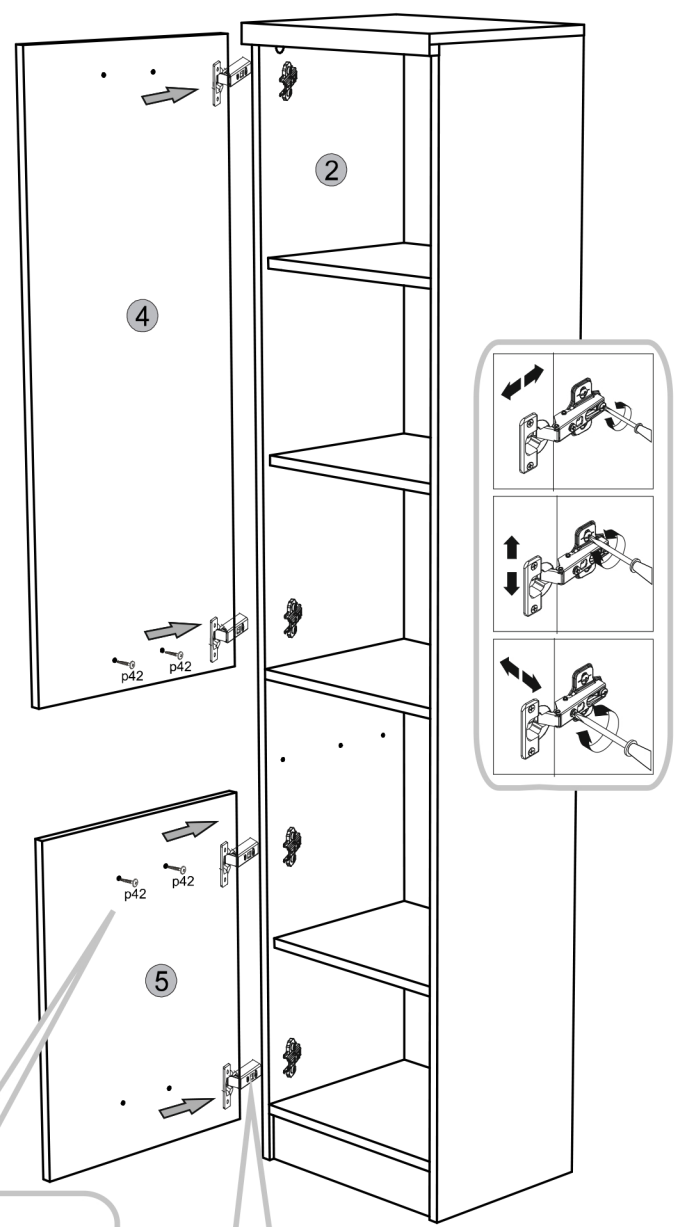
# 9



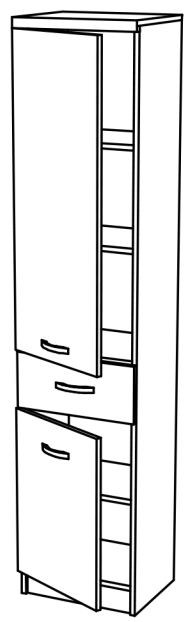


# 8

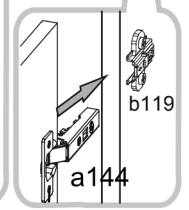
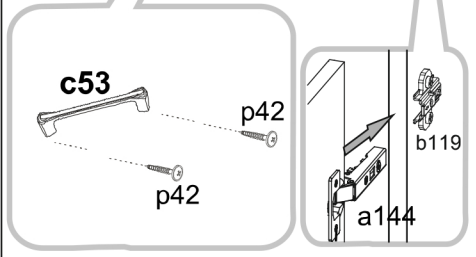
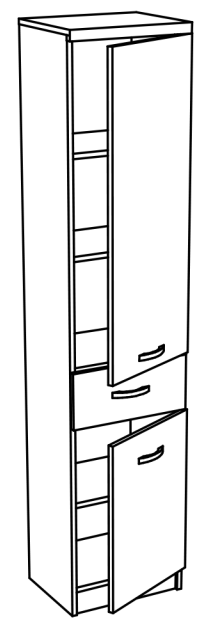
## II



## L

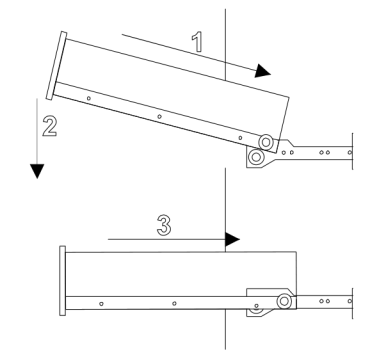
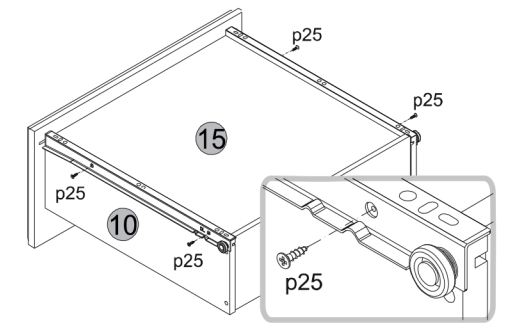
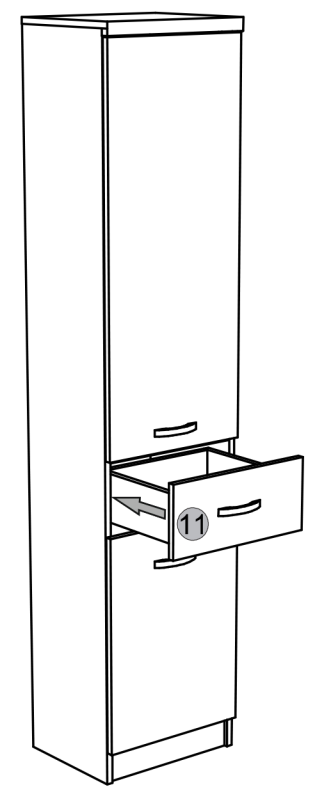
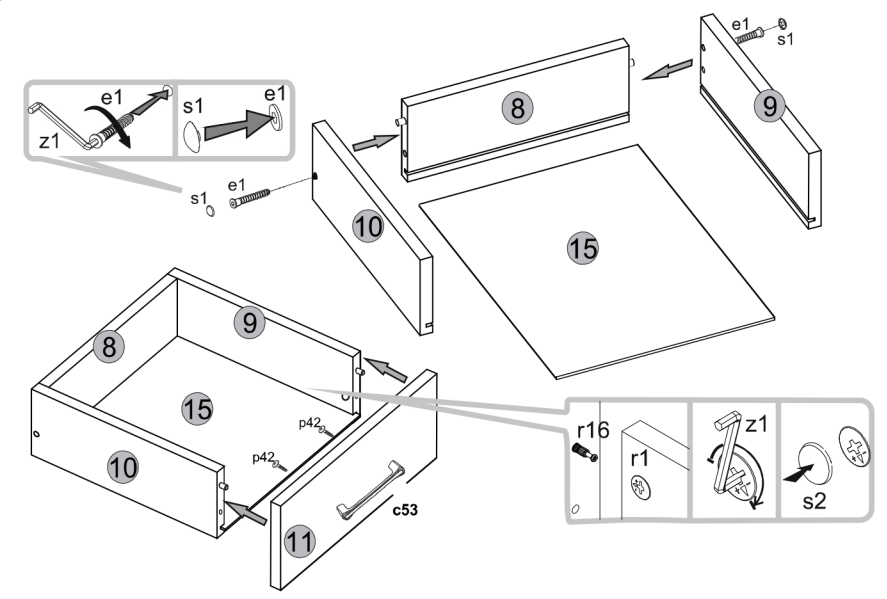


## R



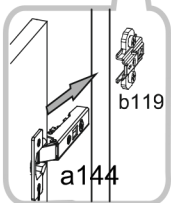
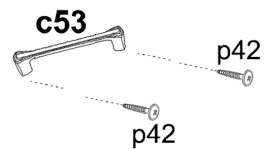
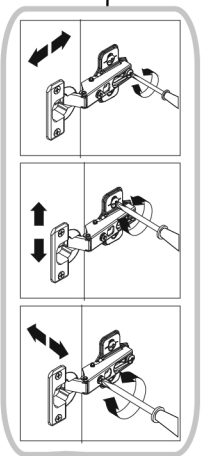
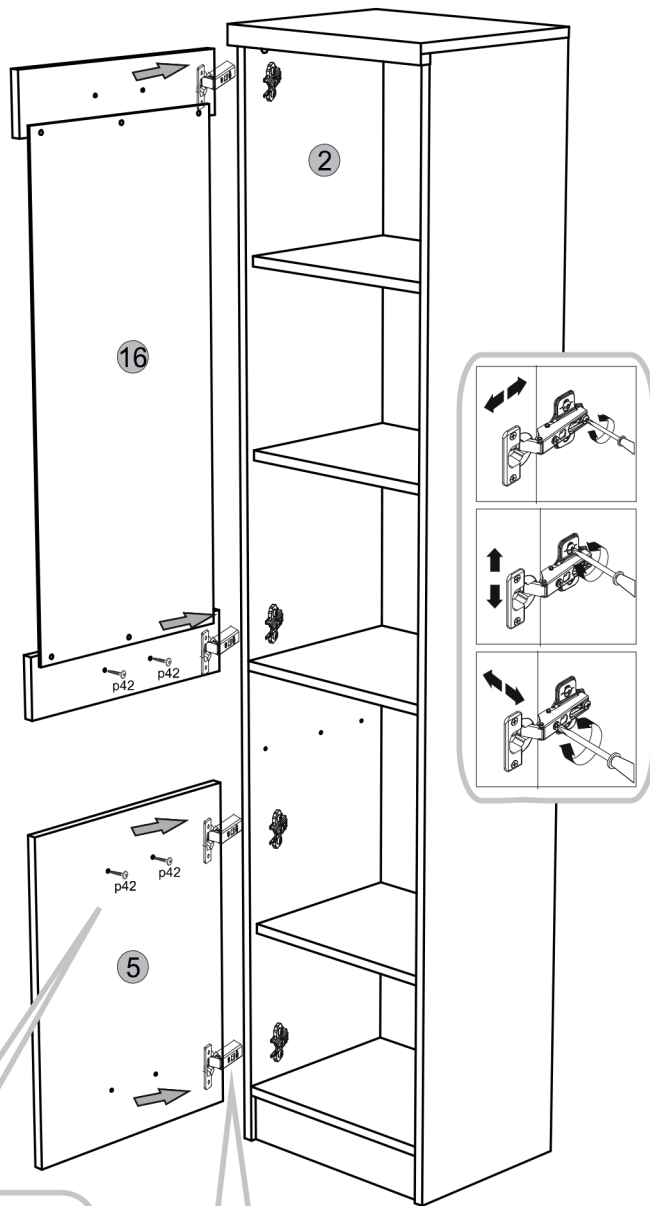
# 9

## II

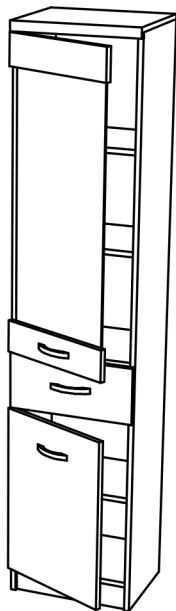


# 8

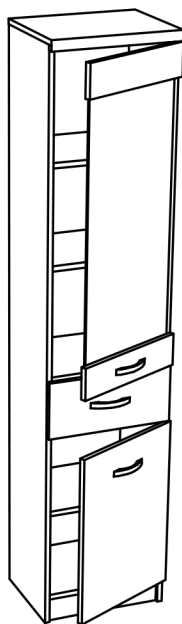
# III



# L



# R



# 9

# III

